



TO LET  
Towers Road, Poynton

JH  
Jordan & Halstead

# Asking Price

## £2,600 pcm

### The Property

Jordan & Halstead are delighted to market this impressive period residence. Situated on the prestigious Towers Road, this property is gated and set within beautiful established gardens. The property boasts plenty of period features with a hint of modernisation here and there.

The property briefly comprises of entrance vestibule, galleried hallway with wooden panelling, cloak/boot room, dining room with feature fireplace and original floorboards, living room with feature fireplace, floorboard flooring and views to the side and rear aspect of the property. Family room with carpet floor covering, fully fitted kitchen with an arrange of wall and base units, food preparation worktops, electric oven, induction hob and dishwasher. Separate utility room with Belfast sink, WC with wash hand basin. To the first floor you will notice the spacious landing area, 3 double bedrooms & a single bedroom with fitted wardrobe. The family bathroom includes bath, shower and wash hand basin. Separate WC.

Externally the house is approached by a sweeping driveway to the large garage and area for parking numerous vehicles. The gardens are well established with mature trees and shrubs, mostly laid to lawn with a large patio area perfect for alfresco dining and entertaining family and friends.



## Material Information

Postcode – SK12 1DD

Area – Approx. 1,956 sqft

EPC Rating – E

Council Tax Band – Band G

Furnishings – Unfurnished

Available – Now

- A substantial detached house
- Beautifully presented
- Four bedrooms (three double)
- Modern bathroom
- Gated driveway providing ample off-road parking for multiple vehicles
- Stunning private garden
- Close to Poynton Town Centre and all local amenities

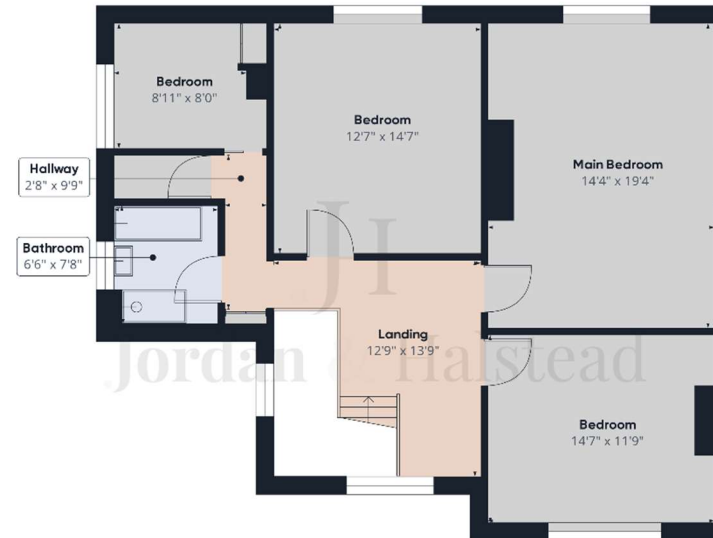
## Directions

From Poynton Town Centre, head north along London Road North towards Hazel Grove. Take the third right turn on to South Park Drive and continue to the end. Turn left on to Towers Road and, after a short distance, the property will be seen on your left-hand side.





Ground Floor



Floor 1

Approximate total area<sup>(1)</sup>  
1956.42 ft<sup>2</sup>

(1) Excluding balconies and terraces

While every attempt has been made to ensure accuracy, all measurements are approximate, not to scale. This floor plan is for illustrative purposes only.

GIRAFFE360



Book your valuation...

Whilst every effort has been made to ensure the information provided here is accurate, all details including written or photographic, are given in good faith. Jordan and Halstead accepts no liability for any discrepancies. These details do not constitute an offer or contract.

01625 789 060  
wilmslow@jordanandhalstead.co.uk  
82 Water Lane, Wilmslow, Cheshire, SK9 5BB