



23 Upper Bryn Road.,
Deeside, CH5 4XQ
£140,000

- No Onward Chain
- Ideal for first time buyers
- Spacious Throughout
- Close to Local Amenities
- A Must View
- Council Tax Band B



NO ONWARD CHAIN | ATTENTION FIRST TIME BUYER OR INVESTORS | SPACIOUS THROUGHOUT

We are pleased to market this very well presented three bedroom link detached property conveniently located within walking distance to local amenities. The property is spacious throughout and we strongly advise an early viewing to appreciate what this properties to offer

In brief the accommodation affords; Entrance Hall/Utility room, downstairs WC, lounge, Dining Room, kitchen, three bedrooms and bathroom, externally there is a low maintenance tired garden which has been decked




WILLIAM GLEAVE
ESTATE AGENTS





WILLIAM GLEAVE
ESTATE AGENTS



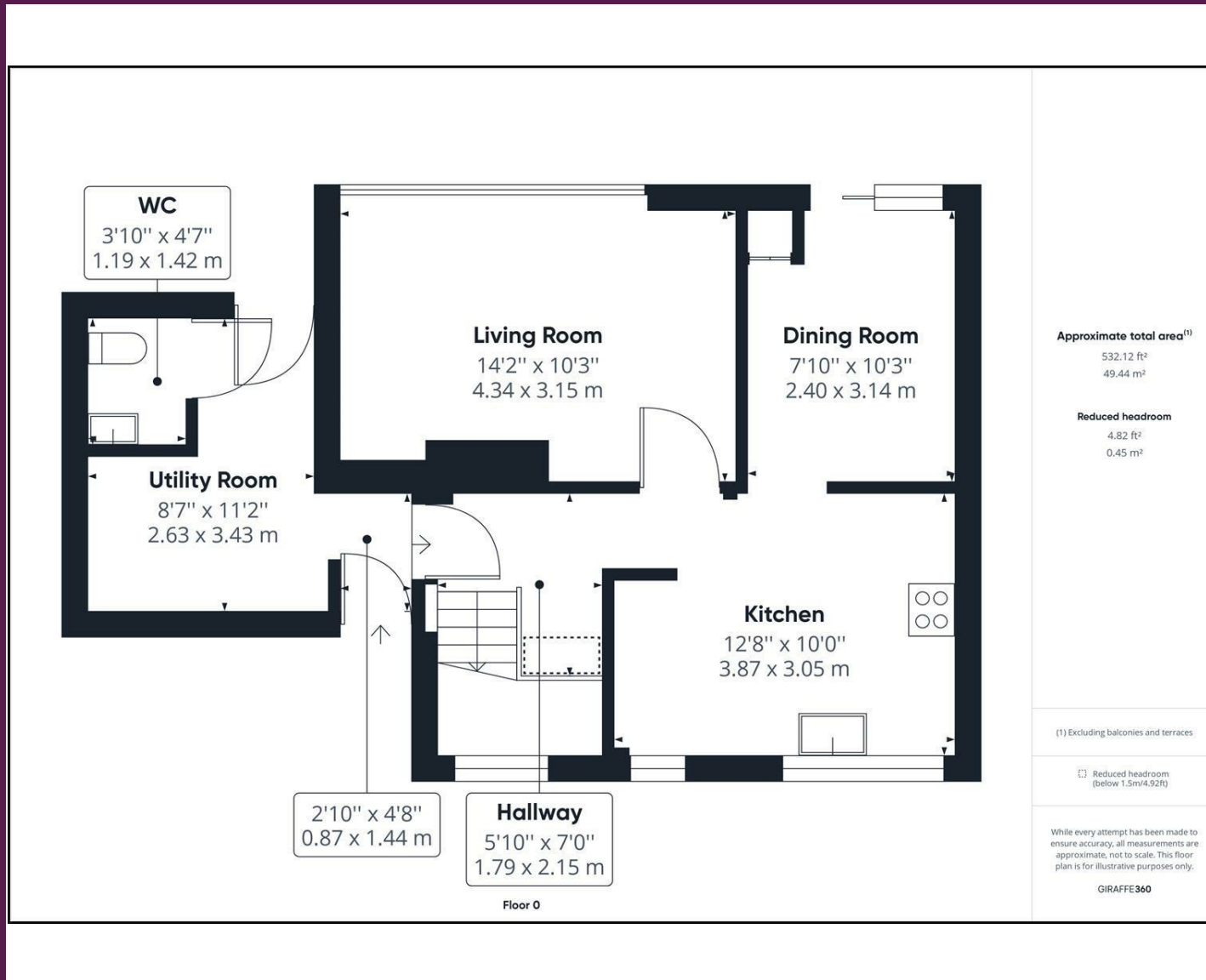
WILLIAMGLEAVE
ESTATE AGENTS

22 Chester Road West, Shotton,
Deeside, Flintshire, CH5 1BX

01244 830000

deeside@wgstateagents.co.uk

www.wgstateagents.com



These particulars, whilst believed to be accurate are set out as a general outline only for guidance and do not constitute any part of an offer or contract. Intending purchasers should not rely on them as statements of representation of fact, but must satisfy themselves by inspection or otherwise as to their accuracy. No person in this firms employment has the authority to make or give any representation or warranty in respect of the property.

