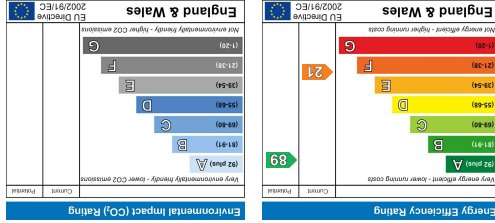


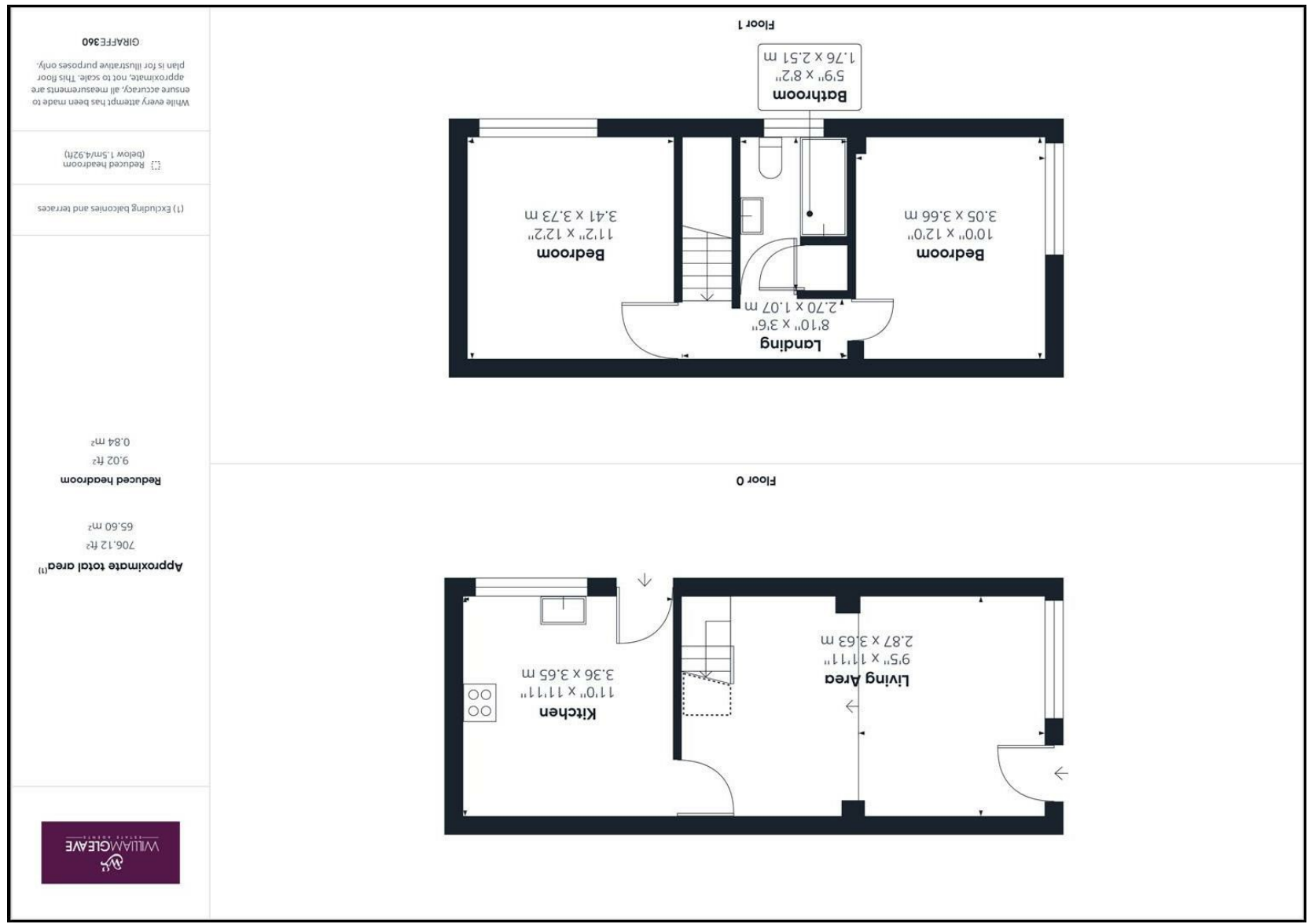
**W:** www.wgestateagents.co.uk  
**E:**  
**T:** 01244 543651  
 1 - 3 Mold Road  
 Buckley, CH7 2JA

**W:** www.wgestateagents.co.uk  
**E:** rhyi@wgestateagents.co.uk  
**T:** 01745 336 699  
 William Gleave Rhyi  
 19 Clwyd Street  
 Rhyi, LL18 3LA

**W:** www.wgestateagents.co.uk  
**E:** landudno@wgestateagents.co.uk  
**T:** 01492 873 854  
 William Gleave Llandudno  
 47-49 Madoc St  
 Llandudno, LL30 2TW



These particulars, whilst believed to be accurate are set out as a general outline only for guidance and do not constitute any part of an offer or contract. Intending purchasers should not rely on them as statements of representation of fact, but must satisfy themselves by inspection or otherwise as to their accuracy. No person in this firm's employment has the authority to make or give any representation or warranty in respect of the property.



**LAMBS LANE, BUCKLEY**  
**£120,000**





IDEAL FOR FTB/INVESTOR - A two bedroom end terrace situated on Lambs Lane, just a short distance from Buckley town centre. In brief, the property comprises of a kitchen/diner with some integrated appliances, good sized living room with stairs rising to the first floor, two double bedrooms and bathroom with three piece suite. Externally the property benefits from off road parking with a grass lawn adjacent. Viewing is highly recommended,

**Kitchen / Diner**

The kitchen comprises of wood effect shaker style fitted wall, base and drawer units with complementary worktop surface and inset stainless steel sink with drainer. There are some integrated appliances to include a electric hob, oven and extractor hood with allocated space for further white goods.

**Living Area**

uPVC double glazed window to the front elevation, uPVC front door, stairs rising to the first floor, feature fireplace, door to rear leading into the kitchen.

**First Floor Landing**

Doors lead off to the bedrooms and bathroom, access to loft via ceiling hatch.

**Bedroom One**

Double bedroom with uPVC double glazed window to the side elevation, electric wall mounted radiator, power points.

**Bedroom Two**

Double bedroom with uPVC double glazed window to the front elevation, electric wall mounted radiator, power points.

**Bathroom**

Three piece suite comprising of a low flush wc, wash hand basin and panel enclosed bath with electric shower over.

**Externally**

Externally the property benefits from off road parking with a grass lawn adjacent.

**We Can Help**

William Gleave Estate Agents are one of the leading independent, respected estate agents in North Wales. Whether you are thinking of selling, renting, buying or just need some friendly advice, William Gleave are here to help. We understand the process can be daunting however, if you're a first-time buyer or an experienced landlord, our experienced teams are here to ensure everything runs smoothly. Call us today on 01244 543 651

