



102 Chester Close,
Deeside, CH5 1AY
£170,000

- A MUST VIEW / NO CHAIN
- BEAUTIFUL ENCLOSED GARDEN
- WALKING DISTANCE TO LOCAL TOWN CENTRE
- OFF ROAD PARKING
- EXTENDED KITCHEN/DINING ROOM
- BRAND NEW 'IDEAL' COMBINATION BOILER INSTALLED OCTOBER 2023
- COUNCIL TAX BAND C



NO ONWARD CHAIN | WALKING DISTANCE TO LOCAL AMENITIES | BEAUTIFUL GARDENS | A MUST VIEW

We are pleased to market this beautifully presented extended two-bedroom semi-detached bungalow located within a short distance to local amenities such as schools, local bus routes and Shotton train station. The property is set in generous size grounds and is ideal for those who love to garden. An early viewing is essential to appreciate what this property has to offer. In brief the accommodation affords; Entrance Hall, lounge, spacious kitchen/dining room, two bedrooms and bathroom. Externally, there is a driveway to the front providing off road parking and a good-sized garden to the rear

The property is located in Shotton which provides great amenities including primary & secondary education, supermarkets, shops, banks, post office and pubs/restaurants. This property also enjoys easy access to commuter routes, such as the A55 Expressway and M56/53 Motorways, offering swift passage further into North Wales, towards Chester City, Wirral, Liverpool and Manchester and the local business parks in both Chester and Deeside.




WILLIAM GLEAVE
ESTATE AGENTS





WILLIAM GLEAVE
— ESTATE AGENTS —



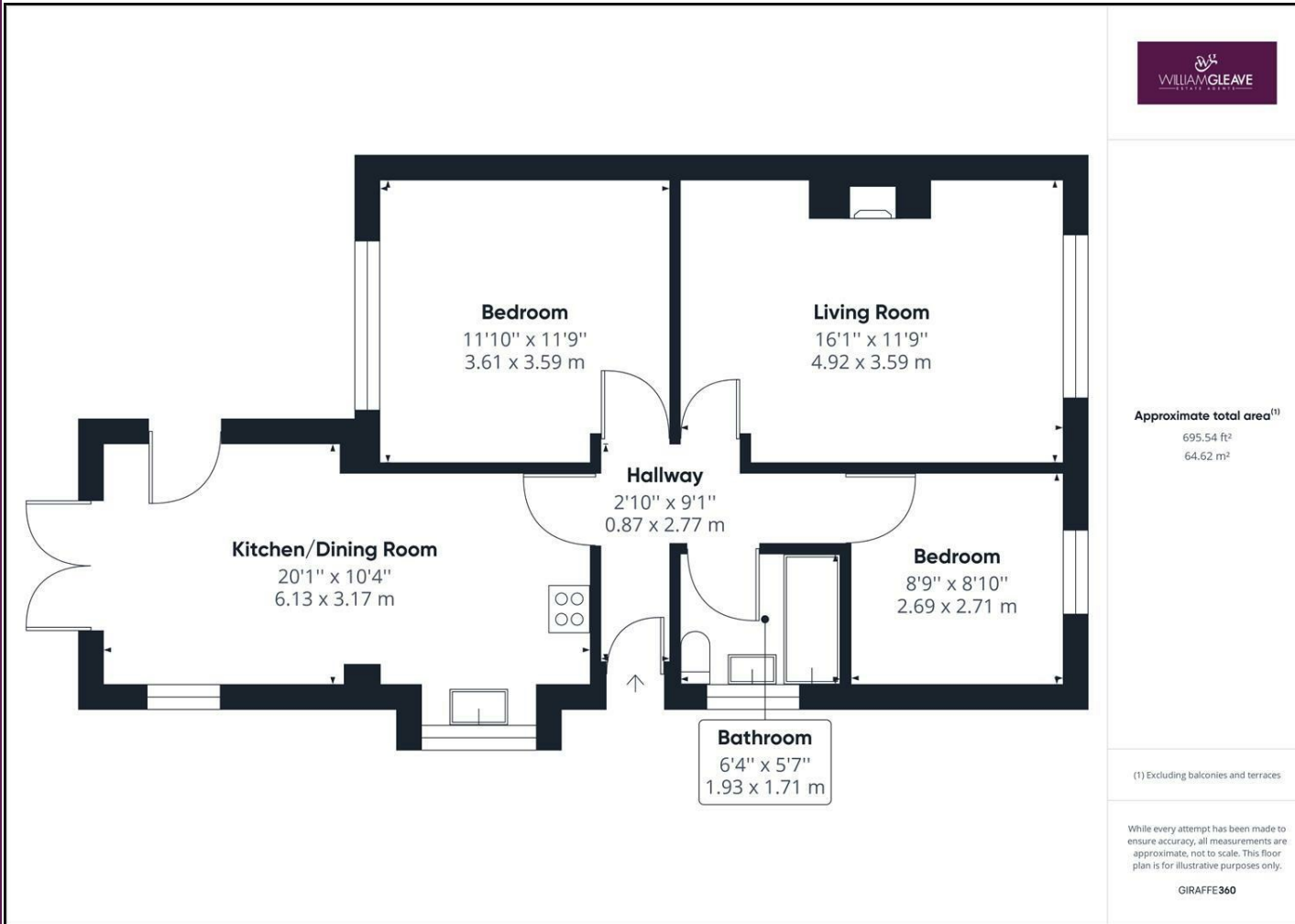
WILLIAMGLEAVE
ESTATE AGENTS

22 Chester Road West, Shotton,
Deeside, Flintshire, CH5 1BX

01244 830000

deeside@wgstateagents.co.uk

www.wgstateagents.com



These particulars, whilst believed to be accurate are set out as a general outline only for guidance and do not constitute any part of an offer or contract. Intending purchasers should not rely on them as statements of representation of fact, but must satisfy themselves by inspection or otherwise as to their accuracy. No person in this firms employment has the authority to make or give any representation or warranty in respect of the property.

