





---

1 Bowlers Court Mostyn  
Street, Shotton, CH5  
1JW

£600

- Available Now
- One Bedroom Apartment
- Central Shotton
- EPC Rating - C
- Allocated Parking
- Ground Floor Apartment



We are delighted to offer this one bedroom ground floor apartment, available for immediate occupation.

Throughout the property is well maintained and comprises - kitchen, lounge, bedroom and bathroom.

Externally you have an allocated parking space.

EPC Rating - C

---





  
WILLIAM GLEAVE  
— ESTATE AGENTS —

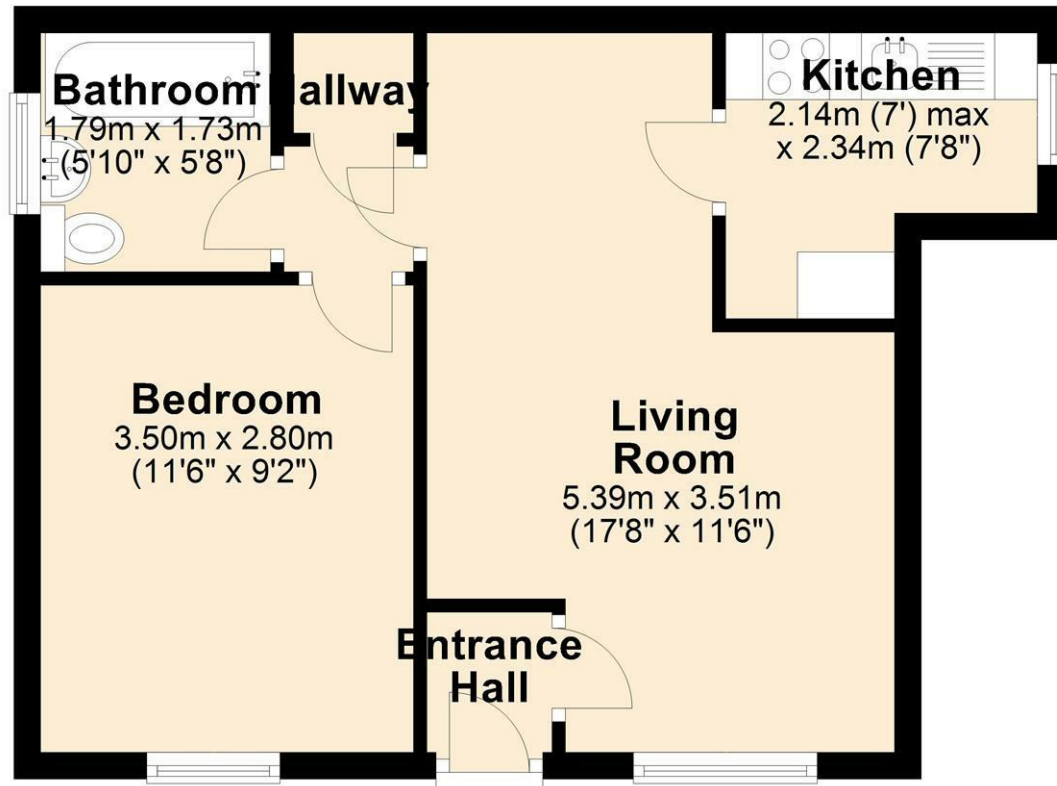






## Ground Floor

Approx. 36.0 sq. metres (387.2 sq. feet)



Total area: approx. 36.0 sq. metres (387.2 sq. feet)

These particulars, whilst believed to be accurate are set out as a general outline only for guidance and do not constitute any part of an offer or contract. Intending purchasers should not rely on them as statements of representation of fact, but must satisfy themselves by inspection or otherwise as to their accuracy. No person in this firms employment has the authority to make or give any representation or warranty in respect of the property.



**WILLIAMGLEAVE**  
— ESTATE AGENTS —

22 Chester Road West, Shotton,  
Deeside, Flintshire, CH5 1BX

01244 830000

deeside@wgstateagents.co.uk

[www.wgstateagents.com](http://www.wgstateagents.com)

Energy Efficiency Rating		
	Current	Potential
Very energy efficient - lower running costs		
(92 plus) <b>A</b>		
(81-91) <b>B</b>		
(69-80) <b>C</b>	70	79
(55-68) <b>D</b>		
(39-54) <b>E</b>		
(21-38) <b>F</b>		
(1-20) <b>G</b>		
Not energy efficient - higher running costs		
England & Wales		
EU Directive 2002/91/EC		